



25-YEAR
WARRANTY



Living

2026 Price List

UNITED STATES (USD) 

flexxform.

Corporate Commitment Statement

Flexxform Designs is a family-owned business with a strong commitment to maintaining the highest possible standards in all that we do. We are always vigilant to be as fair as possible with our customers, employees, and our vendors. In subscribing to the highest possible level of customer satisfaction, we promise to:

- Build all products to the highest level of quality
- Stand behind our products and resolve issues without delay
- Maintain consistent lead times, and honor promised delivery dates to the best of our ability
- Maintain clear and open communication with all customers, employees, and vendors
- Maintain continuous product innovation and improvement
- Always provide friendly and expedient customer service
- Listen to the concerns and needs of our customers, employees, and vendors
- Keep in tune with the changing requirements in the market

We believe that our future success will be determined by our strong personal and corporate commitment to the standards listed above.



Environmental Statement



As a manufacturer of soft seating, foam, and upholstery, made of petroleum/oil-based raw materials is a large part of our furniture. We are actively working with innovators and companies to find a high-quality, environmentally friendly, bio-degradable, or recyclable 'foam' product. Environmentally safe upholsteries are available, such as silicon, cotton, flax, and linen. There are also upholsteries available that make use of recycled plastics. Please view our graded-in program or speak to our customer service department if you have any questions.

The wood used in the construction of our products is sourced from sustainable tree farms in Canada and the United States. All wood is Forest Stewardship Council (FSC) or Sustainable Forest Initiative (SFI) certified.

Wastage is a large part of the manufacturing process, we attempt to limit what we discard by reusing potential wastage in our product construction. For example, excess upholstery is used as a barrier between the steel spring and foam on the backs of our lounge furniture. This upcycling gives you a more economical and higher quality product.

Our efforts to reduce the environmental impact of our products begins during the design and development phase. Whenever an existing product is changed, or a new one is being developed, we will take into account the environmental impact of the materials chosen; including their origin, use of our products, and end-of-life recovery options. Employing this concept, we give preference to renewable, recycled, recyclable, and biodegradable materials and will also make design considerations to conserve raw materials, water, and energy.

Another unique program that Flexxform offers is our reupholstery program. Well made, highly-constructed lounge furniture can be reupholstered. This saves hundreds of thousands of tons of waste from ending up in landfills every year. Please speak to our customer service team for details.

Flexxform is committed to a sustainable future for the furniture industry. We are leaders in developing new ways to utilize raw materials sustainably in view of this amazing planet earth we call home, being clean and healthy for generations to come!

General Information

Ordering Procedures:

Please e-mail all purchase orders to:

Flexxform Designs Inc.
1456 Church Ave, Winnipeg MB
Canada R2X 1G4
Phone: 844-541-0081
e-mail: info@flexxform.co

All prices shown in this price book are list prices and are subject to change without notice.

All orders will be acknowledged via email. Customer must check order acknowledgment for accuracy and notify Flexxform of any discrepancies within 24 hours, otherwise acknowledgment constitutes a final agreement between Flexxform Designs Inc. and the customer.

Distribution of this price list does not in itself constitute an offer to sell. Orders may only be placed by authorized Flexxform dealers only.

Payment Terms:

Payment terms are net 30 days. Pricing does not include state or provincial taxes. Payment by credit card will be considered on a per order basis. If invoice is not paid in full within 30 days, a late payment charge of 2% per month (24% per annum) will be applied on overdue invoices. First-time orders require a credit application and 50% deposit, balance will be due after shipping.

Order Cancellations:

After an order has been acknowledged and placed into production, cancellations cannot be accepted without the consent of Flexxform. In the case of an order cancellation, customer may be invoiced a cancellation fee of no less than 20% of the value of the customers Purchase Order. Additional "work in progress" fees may be invoiced as well. Cancellations must be made in writing to the factory.

Returns:

Product will be accepted for return only with an authorized written agreement. Product approved for return must be returned properly packaged in the original factory cartons. Return transportation charges must be prepaid by customer. In the case of returned goods customers will be invoiced a restocking fee equal to 20% of the value of the customers Purchase Order.

Shipping/Freight:

Freight is included dock to dock. Dropshipping is available, as quoted.

All Flexxform Designs Inc. furniture products are carefully inspected and cartoned by trained personnel before they leave the factory. If freight appears damaged on receipt, please do not refuse the shipment. Please note that the delivering carrier will not accept responsibility for shortages or damages if these are not noted on the bill of lading. Claims for concealed damages must be made to Flexxform head office within 10 days of delivery. Flexxform will not be liable for concealed damages after 10 business days if cartons are not opened within that time.

Storage Charges:

Flexxform reserves the right to apply a storage fee if customer does not accept shipment within 5 business days from the acknowledged ship date.

Customer's Own Material:

Customer supplied materials must be shipped prepaid to Flexxform Designs Inc. and must be accompanied by a NAFTA certificate of origin and a commercial invoice as required by Canada Customs. Commercial invoice must clearly indicate the description of the fabric, including the makeup or content, the selling price, and the country of origin.

General Information

COM materials must be received at least two weeks prior to the acknowledged ship date in order to avoid any delays.

COM material must be clearly identified with the following information:

- Fabric name and color
- Customer name
- Purchase order number

Flexxform reserves the right to refuse to use any COM materials that we feel will compromise the integrity of our products.

All COM's are cut "up the roll" unless otherwise specified by the customer. Flexxform will not be responsible for incorrect application of COM materials, unless we have been provided with application instructions by the customer.

Fabric Repeats:

Unless otherwise stated, fabric rolls are assumed to be a minimum of 54" wide. The following chart is used to calculate the extra yardage required for fabrics with a repeat.

| Repeat | Up the Roll | Across the Roll |
|----------|-------------|-----------------|
| 1 - 5" | 15% | 10% |
| 6 - 9" | 25% | 15% |
| 10 - 13" | 30% | 20% |
| 14 - 20" | 35% | 25% |
| 21 - 27" | 40% | 30% |
| Over 28" | 45% | 40% |

When running upholstery across the roll, most will cost an additional 5%. Please request a quote specifying to run the upholstery across the roll.

Fabric Grades:

Refer to the fabric listings in the Graded In Program to determine fabric grades for all upholsteries from Flexxform's preferred partners. Flexxform will also provide graded-in pricing from most other suppliers, upon request.

Contrasting Upholstery:

Different fabrics may be specified on the seat and on the back. In this case, price using the higher grade of the two. No additional upcharge applies.

Warranty:

Flexxform Designs is pleased to warrant products it manufactures against defects in materials and workmanship for **25 years** to the original purchaser. This warranty includes the frame, foam, and stitching.

The only exceptions are as follows:

1. It shall not apply to any products that have been subjected to misuse, abuse, alteration, or improper maintenance.
2. Flexxform Designs is not responsible for variations in wood finishes that are a result of natural wood color variation.
3. Flexxform will replace the defective part or entire product if needed but request that the faulty product be returned to the factory to determine fault and ensure there is a permanent resolution to the issue.
4. Flexxform Designs warranties all upholsteries for 5 years unless a greater warranty is offered by upholstery manufacturer.
5. Components, such as casters, glides, power, and mechanisms are warrantied for 10 years.
6. The battery power options are subject to the manufacturer's warranty.

era

jaz

joy

oka

sea

GINZIN

era collection

Ordering Guide



Please specify all **options, upholstery names, and colors** in PO description.



Contrasting Upholstery
No Upcharge
Price using higher grade upholstery



Contrasting Stitching
+\$41/piece
Please specify color when ordering



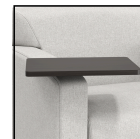
Custom Embroidery
Contact for Pricing



Moisture Barrier
+\$670



Power
Pricing Varies
See Power Price List for corded and battery power options



Tablet Arm
+\$484/arm
Please specify color when ordering

era collection



Comes Standard with
1.5" Plastic Black Legs
*Refer to the front
page for options*

One Seat



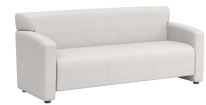
| Item No. | Item Name | COM/1 | 2 | 3 | 4 | 5 | 6 | 7 | 8 |
|----------|-----------|-------|------|------|------|------|------|------|------|
| ERA1 | One Seat | 2238 | 2507 | 2808 | 3145 | 3491 | 3840 | 4186 | 4563 |

Two Seat



| Item No. | Item Name | COM/1 | 2 | 3 | 4 | 5 | 6 | 7 | 8 |
|----------|-----------|-------|------|------|------|------|------|------|------|
| ERA2 | Two Seat | 3354 | 3756 | 4207 | 4712 | 5230 | 5753 | 6271 | 6835 |

Three Seat



| Item No. | Item Name | COM/1 | 2 | 3 | 4 | 5 | 6 | 7 | 8 |
|----------|------------|-------|------|------|------|------|------|------|------|
| ERA3 | Three Seat | 4037 | 4521 | 5064 | 5672 | 6296 | 6926 | 7549 | 8228 |

jaz collection

Ordering Guide



Please specify all **options, upholstery names, and colors** in PO description.



Contrasting Upholstery
No Upcharge
Price using higher grade upholstery



Contrasting Stitching
+\$41/piece
Please specify color when ordering



Custom Embroidery
Contact for Pricing



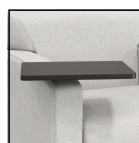
Moisture Barrier
+\$670



Power
Pricing Varies
See Power Price List for corded and battery power options



Removable Seat Cushion
+\$210/cushion



Tablet Arm
+\$484/arm
Please specify color when ordering

jaz collection



Comes Standard with
7" Wood Legs
*Refer to the front
page for options*

One Seat



| Item No. | Item Name | COM/1 | 2 | 3 | 4 | 5 | 6 | 7 | 8 |
|----------|-----------|-------|------|------|------|------|------|------|------|
| JAZ1 | One Seat | 2607 | 2920 | 3270 | 3662 | 4065 | 4472 | 4874 | 5313 |

joy collection

Ordering Guide



Please specify all **options, upholstery names, and colors** in PO description.



Contrasting Upholstery
No Upcharge
Price using higher grade upholstery



Contrasting Stitching
+\$41/piece
Please specify color when ordering



Custom Embroidery
Contact for Pricing



Moisture Barrier
+\$670



Power
Pricing Varies
See Power Price List for corded and battery power options



Removable Seat Cushion
+\$210/cushion



Black Cast Aluminum Legs
+\$108



Silver Cast Aluminum Legs
+\$108



Casters **+\$438**
Only applicable on Single Seater

joy collection



Comes Standard with
5" Wood Feet
Refer to the front
page for options

One Seat



| Item No. | Item Name | COM/1 | 2 | 3 | 4 | 5 | 6 | 7 | 8 |
|----------|-----------|-------|------|------|------|------|------|------|------|
| JOY1 | One Seat | 2752 | 3082 | 3452 | 3866 | 4291 | 4720 | 5145 | 5608 |

Two Seat



| Item No. | Item Name | COM/1 | 2 | 3 | 4 | 5 | 6 | 7 | 8 |
|----------|-----------|-------|------|------|------|------|------|------|------|
| JOY2 | Two Seat | 3499 | 3919 | 4389 | 4916 | 5457 | 6003 | 6543 | 7132 |

Three Seat



| Item No. | Item Name | COM/1 | 2 | 3 | 4 | 5 | 6 | 7 | 8 |
|----------|------------|-------|------|------|------|------|------|------|------|
| JOY3 | Three Seat | 4248 | 4758 | 5329 | 5968 | 6624 | 7286 | 7942 | 8657 |

Ottoman



| Item No. | Item Name | COM/1 | 2 | 3 | 4 | 5 | 6 | 7 | 8 |
|----------|---------------------|-------|------|------|------|------|------|------|------|
| JOYO16 | 22"W x 16"D Ottoman | 974 | 1091 | 1222 | 1369 | 1520 | 1672 | 1822 | 1986 |
| JOYO18 | 22"W x 18"D Ottoman | 1003 | 1123 | 1258 | 1409 | 1564 | 1720 | 1875 | 2044 |
| JOYO20 | 22"W x 20"D Ottoman | 1043 | 1168 | 1308 | 1465 | 1626 | 1789 | 1950 | 2126 |

oka collection

Ordering Guide



Please specify all **options, upholstery names, and colors** in PO description.



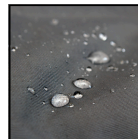
Contrasting Upholstery
No Upcharge
Price using higher grade upholstery



Contrasting Stitching
+\$41/piece
Please specify color when ordering



Custom Embroidery
Contact for Pricing



Moisture Barrier
+\$670



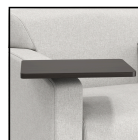
Power
Pricing Varies
See Power Price List for corded and battery power options



Black Cast Aluminum Legs
+\$108



Silver Cast Aluminum Legs
+\$108



Tablet Arm
+\$484/arm
Please specify color when ordering



Removable Seat Cushion
+\$210/cushion

oka collection



Comes Standard with
5" Wood Feet
*Refer to the front
page for options*



One Seat

| Item No. | Item Name | COM/1 | 2 | 3 | 4 | 5 | 6 | 7 | 8 |
|----------|-----------|-------|------|------|------|------|------|------|------|
| OKA1 | One Seat | 2839 | 3180 | 3562 | 3989 | 4428 | 4871 | 5309 | 5787 |

sea collection

Ordering Guide



Please specify all **options, upholstery names, and colors** in PO description.



Contrasting Upholstery
No Upcharge
Price using higher grade upholstery



Contrasting Stitching
+\$41/piece
Please specify color when ordering



Custom Embroidery
Contact for Pricing



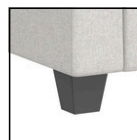
Moisture Barrier
+\$670



Power
Pricing Varies
See Power Price List for corded and battery power options



Removable Seat Cushion
+\$210/cushion



Wood Legs
+\$108

sea collection



Comes Standard with
3" Black Plastic Legs
*Refer to the front
page for options*

One Seat



| Item No. | Item Name | COM/1 | 2 | 3 | 4 | 5 | 6 | 7 | 8 |
|----------|-----------|-------|------|------|------|------|------|------|------|
| SEA1 | One Seat | 2706 | 3031 | 3395 | 3802 | 4220 | 4642 | 5060 | 5515 |

Two Seat



| Item No. | Item Name | COM/1 | 2 | 3 | 4 | 5 | 6 | 7 | 8 |
|----------|-----------|-------|------|------|------|------|------|------|------|
| SEA2 | Two Seat | 3546 | 3972 | 4449 | 4983 | 5531 | 6084 | 6632 | 7229 |

Three Seat



| Item No. | Item Name | COM/1 | 2 | 3 | 4 | 5 | 6 | 7 | 8 |
|----------|------------|-------|------|------|------|------|------|------|------|
| SEA3 | Three Seat | 4078 | 4567 | 5115 | 5729 | 6359 | 6995 | 7625 | 8311 |

CHILDREN

era jr.

jaz jr.

joy jr.

sea jr.

era jr. collection

Ordering Guide



Please specify all **options, upholstery names, and colors** in PO description.



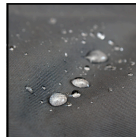
Contrasting Upholstery
No Upcharge
Price using higher grade upholstery



Contrasting Stitching
+\$41/piece
Please specify color when ordering



Custom Embroidery
Contact for Pricing



Moisture Barrier
+\$670



Power
Pricing Varies
See Power Price List for corded and battery power options

era jr. collection

Comes Standard with
1.5" Plastic Black Legs
*Refer to the front
page for options*



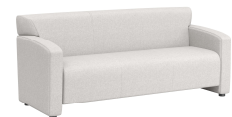
Jr. One Seat

| Item No. | Item Name | COM/1 | 2 | 3 | 4 | 5 | 6 | 7 | 8 |
|----------|--------------------------------|-------|------|------|------|------|------|------|------|
| ERAJ1 | Jr. One Seat - 14" Seat Height | 1815 | 2033 | 2277 | 2550 | 2831 | 3114 | 3394 | 3699 |



Jr. Two Seat

| Item No. | Item Name | COM/1 | 2 | 3 | 4 | 5 | 6 | 7 | 8 |
|----------|--------------------------------|-------|------|------|------|------|------|------|------|
| ERAJ2 | Jr. Two Seat - 14" Seat Height | 2845 | 3186 | 3568 | 3996 | 4436 | 4880 | 5319 | 5798 |



Jr. Three Seat

| Item No. | Item Name | COM/1 | 2 | 3 | 4 | 5 | 6 | 7 | 8 |
|----------|----------------------------------|-------|------|------|------|------|------|------|------|
| ERAJ3 | Jr. Three Seat - 14" Seat Height | 3423 | 3834 | 4294 | 4809 | 5338 | 5872 | 6400 | 6976 |

jaz jr. collection

Ordering Guide



Please specify all **options, upholstery names, and colors** in PO description.



Contrasting Upholstery
No Upcharge
Price using higher grade upholstery



Contrasting Stitching
+\$41/piece
Please specify color when ordering



Custom Embroidery
Contact for Pricing



Moisture Barrier
+\$670



Power
Pricing Varies
See Power Price List for corded and battery power options

jaz jr. collection



Comes Standard with
4.75" Wood Legs
*Refer to the front
page for options*

Jr. One Seat



| Item No. | Item Name | COM/1 | 2 | 3 | 4 | 5 | 6 | 7 | 8 |
|----------|--------------------------------|-------|------|------|------|------|------|------|------|
| JAZJ1 | Jr. One Seat - 14" Seat Height | 2053 | 2299 | 2575 | 2884 | 3201 | 3521 | 3838 | 4183 |

joy jr. collection

Ordering Guide



Please specify all **options, upholstery names, and colors** in PO description.



Contrasting Upholstery
No Upcharge
Price using higher grade upholstery



Contrasting Stitching
+\$41/piece
Please specify color when ordering



Custom Embroidery
Contact for Pricing



Moisture Barrier
+\$670



Power
Pricing Varies
See Power Price List for corded and battery power options

joy jr. collection



Comes Standard with
1.5" Plastic Black Legs
*Refer to the front
page for options*

Jr. One Seat



| Item No. | Item Name | COM/1 | 2 | 3 | 4 | 5 | 6 | 7 | 8 |
|----------|--------------------------------|-------|------|------|------|------|------|------|------|
| JOYJ1 | Jr. One Seat - 14" Seat Height | 1780 | 1994 | 2233 | 2501 | 2776 | 3054 | 3329 | 3629 |

Jr. Two Seat



| Item No. | Item Name | COM/1 | 2 | 3 | 4 | 5 | 6 | 7 | 8 |
|----------|--------------------------------|-------|------|------|------|------|------|------|------|
| JOYJ2 | Jr. Two Seat - 14" Seat Height | 2623 | 2938 | 3291 | 3686 | 4091 | 4500 | 4905 | 5346 |

Jr. Three Seat



| Item No. | Item Name | COM/1 | 2 | 3 | 4 | 5 | 6 | 7 | 8 |
|----------|----------------------------------|-------|------|------|------|------|------|------|------|
| JOYJ3 | Jr. Three Seat - 14" Seat Height | 3075 | 3444 | 3857 | 4320 | 4795 | 5275 | 5750 | 6268 |

sea jr. collection

Ordering Guide



Please specify all **options, upholstery names, and colors** in PO description.



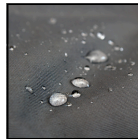
Contrasting
Upholstery
No Upcharge
Price using
higher grade
upholstery



Contrasting
Stitching
+\$41/piece
Please specify
color when
ordering



Custom
Embroidery
**Contact for
Pricing**



Moisture
Barrier
+\$670



Power
Pricing Varies
See Power Price
List for corded
and battery
power options

sea jr. collection



Comes Standard with
1.5" Plastic Black Legs
*Refer to the front
page for options*

Jr. One Seat



| Item No. | Item Name | COM/1 | 2 | 3 | 4 | 5 | 6 | 7 | 8 |
|----------|--------------|-------|------|------|------|------|------|------|------|
| SEAJ1 | Jr. One Seat | 2100 | 2352 | 2634 | 2950 | 3275 | 3603 | 3927 | 4280 |

Jr. Two Seat



| Item No. | Item Name | COM/1 | 2 | 3 | 4 | 5 | 6 | 7 | 8 |
|----------|--------------|-------|------|------|------|------|------|------|------|
| SEAJ2 | Jr. Two Seat | 2792 | 3127 | 3502 | 3922 | 4353 | 4788 | 5219 | 5689 |

Jr. Three Seat



| Item No. | Item Name | COM/1 | 2 | 3 | 4 | 5 | 6 | 7 | 8 |
|----------|----------------|-------|------|------|------|------|------|------|------|
| SEAJ3 | Jr. Three Seat | 3211 | 3596 | 4028 | 4511 | 5007 | 5508 | 6004 | 6544 |

