



Construction:

- Enduraframe certified hardwood frame with 3/4" plywood components
- California TB117-2013 compliant, 2.2 lb / 100 lb compression foam
- Nylon seat webbing
- 550 lb weight rating
- Enduraseam reinforced double-stitched seams
- Fabric-covered steel back springs to protect foam integrity

Features:

- ANSI/BIFMA compliant
- MAS Certified Green Plus™
- Available in Jr. and full-size models
- Available in 1-, 2-, and 3-seat configurations
- 1-1/2" black polyurethane legs

Options:

- Contrasting upholstery
- Contrasting stitching
- Custom embroidery
- Moisture barrier
- Power integration
- Tablet arm (not applicable on Jr. sizes)

Support Profile

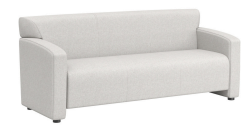


Upholstery:

The Era collection support the Flexxform graded-in program for coated or woven upholsteries. For upholsteries not included in the graded in program, please contact Customer Service for pricing.

Warranty:

The Era collection is covered under Flexxform's 25-year warranty. For more information, visit www.flexxform.co/warranty.



One Seat ERA1

Width	32"
Depth	30"
Height	32.5"
Seat Height	17"
COM YD - Back	3
COM YD - Seat	1
COM YD - Arms	2
COM YD - Full	5.5
Cubic Feet	18
Weight	70 lbs

Two Seat ERA2

Width	54"
Depth	30"
Height	32.5"
Seat Height	17"
COM YD - Back	3.5
COM YD - Seat	1.5
COM YD - Arms	2
COM YD - Full	6.5
Cubic Feet	28
Weight	100 lbs

Three Seat ERA3

Width	75"
Depth	30"
Height	32.5"
Seat Height	17"
COM YD - Back	4
COM YD - Seat	2
COM YD - Arms	2
COM YD - Full	7.5
Cubic Feet	39
Weight	120 lbs

Jr. One Seat ERAJ1

Width	25"
Depth	26"
Height	27"
Seat Height	14"
COM YD - Back	2
COM YD - Seat	1
COM YD - Arms	1.5
COM YD - Full	4
Cubic Feet	10
Weight	53 lbs

Jr. Two Seat ERAJ2

Width	41"
Depth	26"
Height	27"
Seat Height	14"
COM YD - Back	2.5
COM YD - Seat	1.5
COM YD - Arms	1.5
COM YD - Full	5.5
Cubic Feet	17
Weight	75 lbs

Jr. Three Seat ERAJ3

Width	57"
Depth	26"
Height	27"
Seat Height	14"
COM YD - Back	3
COM YD - Seat	2
COM YD - Arms	1.5
COM YD - Full	7
Cubic Feet	23
Weight	90 lbs