



lodestone

flexxform
Carnegie Bespoke

lodestone



Magnetic motion meets modular design. Lodestone's five shapes link and separate effortlessly, giving you seating that shifts as ideas flow. Powered by Flexxform's Enduraframe™, it's both durable and full of personality.

flexxform®

Design

Lodestone is a family of low, plush poufs that bring a soft, approachable rhythm to any space. Rounded forms and thoughtful proportions make each piece feel balanced alone or as part of a connected arrangement, while their design supports flexible, intentional layouts without feeling heavy or cluttered.





Performance

Enduraframe™ certified

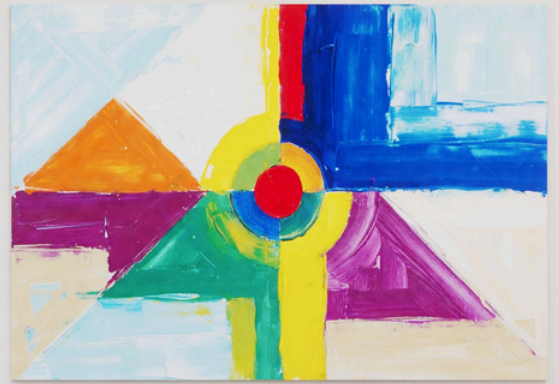
550 lb weight rating for exceptional durability

All foam components are environmentally friendly and California TB117 compliant

Reinforced seams keep Lodestone's stitching strong and bedbug proof

Lodestone's frame is constructed of solid American hardwood with 3/4" Canadian plywood components

All joins in the wood are glued and stapled to double the strength



flexxform



1456 Church Ave.
Winnipeg, MB
Canada R2X 1G4



info@flexxform.co | 1-844-541-0081 | www.flexxform.co
040926