



Construction:

- Enduraframe certified hardwood frame with 3/4" plywood components
- California TB117-2013 compliant, 2.2 lb / 100 lb compression foam
- Nylon seat webbing
- 550 lb weight rating
- Enduraseam reinforced double-stitched seams

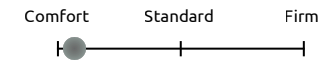
Features:

- ANSI/BIFMA compliant
- MAS Certified Green Plus™
- 2" black polyurethane legs

Options:

- Contrasting upholstery
- Contrasting stitching
- Custom embroidery
- Moisture barrier
- Power integration
- Laminate worksurface (2-seat models only)
- Ganging brackets

Support Profile



Upholstery:

The Ion collection supports the Flexxform graded-in program for coated or woven upholsteries. For upholsteries not included in the graded-in program, please contact Customer Service for pricing.

Warranty:

The Ion collection is covered under Flexxform's 25-year warranty. For more information, visit www.flexxform.co/warranty.



One Seat
ION1

Width	24"
Depth	30"
Height	44"
Seat Height	18"
COM YD - Back	2
COM YD - Base	1.5
COM YD - Seat Cushion	1.5
COM YD - Back Cushion	1.5
COM YD - Side Panel	-
COM YD - Full	6
Cubic Feet	19
Weight	87 lbs



One Seat w/ Left Arm
ION1L

Width	28.5"
Depth	30"
Height	44"
Seat Height	18"
COM YD - Back	2
COM YD - Base	1.5
COM YD - Seat Cushion	1.5
COM YD - Back Cushion	1.5
COM YD - Side Panel	1.5
COM YD - Full	8.5
Cubic Feet	22.5
Weight	122 lbs



One Seat w/ Right Arm
ION1R

Width	28.5"
Depth	30"
Height	44"
Seat Height	18"
COM YD - Back	2
COM YD - Base	1.5
COM YD - Seat Cushion	1.5
COM YD - Back Cushion	1.5
COM YD - Side Panel	1.5
COM YD - Full	8.5
Cubic Feet	22.5
Weight	122 lbs



One Seat w/ Arms
ION1A

Width	33"
Depth	30"
Height	44"
Seat Height	19"
COM YD - Back	3
COM YD - Base	3
COM YD - Seat Cushion	1.5
COM YD - Back Cushion	1.5
COM YD - Side Panel	6.5
COM YD - Full	11
Cubic Feet	25
Weight	150 lbs



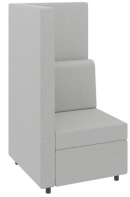
One Seat Privacy Back
ION1-PB

Width	24"
Depth	30"
Height	54"
Seat Height	18"
COM YD - Back	4
COM YD - Base	1.5
COM YD - Seat Cushion	1.5
COM YD - Back Cushion	1.5
COM YD - Side Panel	-
COM YD - Full	7.5
Cubic Feet	23
Weight	187 lbs



One Seat Privacy Back w/ Left Arm
ION1L-PB

Width	28.5"
Depth	30"
Height	54"
Seat Height	18"
COM YD - Back	4
COM YD - Base	1.5
COM YD - Seat Cushion	1.5
COM YD - Back Cushion	1.5
COM YD - Side Panel	1.5
COM YD - Full	10
Cubic Feet	28
Weight	125 lbs



One Seat Privacy Back w/ Right Arm

ION1R-PB	
Width	28.5"
Depth	30"
Height	54"
Seat Height	18"
COM YD - Back	4
COM YD - Base	1.5
COM YD - Seat Cushion	1.5
COM YD - Back Cushion	1.5
COM YD - Side Panel	1.5
COM YD - Full	10
Cubic Feet	28
Weight	125 lbs



One Seat Privacy Back w/ Arms

ION1A-PB	
Width	33"
Depth	30"
Height	54"
Seat Height	19"
COM YD - Back	3.5
COM YD - Base	3
COM YD - Seat Cushion	1.5
COM YD - Back Cushion	1.5
COM YD - Side Panel	7
COM YD - Full	12.5
Cubic Feet	31
Weight	155 lbs



Two Seat

ION2	
Width	48"
Depth	30"
Height	44"
Seat Height	18"
COM YD - Back	3
COM YD - Base	2
COM YD - Seat Cushion	3
COM YD - Back Cushion	3
COM YD - Side Panel	-
COM YD - Full	10
Cubic Feet	38
Weight	163 lbs



Two Seat w/ Left Arm

ION2L	
Width	52.5"
Depth	30"
Height	44"
Seat Height	18"
COM YD - Back	3
COM YD - Base	2
COM YD - Seat Cushion	3
COM YD - Back Cushion	3
COM YD - Side Panel	1.5
COM YD - Full	12.5
Cubic Feet	41.5
Weight	210 lbs



Two Seat w/ Right Arm

ION2R	
Width	52.5"
Depth	30"
Height	44"
Seat Height	18"
COM YD - Back	3
COM YD - Base	2
COM YD - Seat Cushion	3
COM YD - Back Cushion	3
COM YD - Side Panel	1.5
COM YD - Full	12.5
Cubic Feet	41.5
Weight	210 lbs



Two Seat w/ Arms

ION2A	
Width	57"
Depth	30"
Height	44"
Seat Height	19"
COM YD - Back	6.5
COM YD - Base	4
COM YD - Seat Cushion	3
COM YD - Back Cushion	2
COM YD - Side Panel	6
COM YD - Full	15
Cubic Feet	43.5
Weight	252 lbs



Two Seat Privacy Back

ION2-PB	
Width	48"
Depth	30"
Height	54"
Seat Height	18"
COM YD - Back	6
COM YD - Base	2
COM YD - Seat Cushion	3
COM YD - Back Cushion	3
COM YD - Side Panel	-
COM YD - Full	12
Cubic Feet	46.5
Weight	166 lbs



Two Seat Privacy Back w/ Left Arm

ION2L-PB	
Width	52.5"
Depth	30"
Height	54"
Seat Height	18"
COM YD - Back	6
COM YD - Base	2
COM YD - Seat Cushion	3
COM YD - Back Cushion	3
COM YD - Side Panel	1.5
COM YD - Full	14.5
Cubic Feet	51
Weight	214 lbs



Two Seat Privacy Back w/ Right Arm

ION2R-PB	
Width	52.5"
Depth	30"
Height	54"
Seat Height	18"
COM YD - Back	6
COM YD - Base	2
COM YD - Seat Cushion	3
COM YD - Back Cushion	3
COM - Side Panels	1.5
COM YD - Full	14.5
Cubic Feet	51
Weight	214 lbs



Two Seat Privacy Back w/ Arms

ION2A-PB	
Width	57"
Depth	30"
Height	54"
Seat Height	19"
COM YD - Back	7
COM YD - Base	4
COM YD - Seat Cushion	3
COM YD - Back Cushion	2
COM - Side Panels	7
COM YD - Full	17
Cubic Feet	53
Weight	257 lbs



Corner Seat

IONC	
Width	31"
Depth	30"
Height	44"
Seat Height	18"
COM YD - Back	4
COM YD - Base	1.5
COM YD - Seat Cushion	1.5
COM YD - Back Cushion	3
COM YD - Side Panel	?
COM YD - Full	9
Cubic Feet	24.5
Weight	221 lbs



Corner Seat Privacy Back

IONC-PB	
Width	31"
Depth	30"
Height	54"
Seat Height	18"
COM YD - Back	7
COM YD - Base	1.5
COM YD - Seat Cushion	1.5
COM YD - Back Cushion	3
COM YD - Side Panel	-
COM YD - Full	12
Cubic Feet	30
Weight	225 lbs

Due to the natural materials and variations in upholstery used in lounge furniture, the dimensions may differ slightly from those stated.



Square Ottoman
IONO

Width	31"
Depth	31"
Height	18"
Seat Height	18"
COM YD - Back	-
COM YD - Base	2
COM YD - Seat Cushion	-
COM YD - Back Cushion	-
COM YD - Side Panel	-
COM YD - Full	2
Cubic Feet	10
Weight	38 lbs